



Carbon Dioxide Polishers

PC02/0 - PC02/3 and MPLUS4000 - MPLUS10000

Parts Manual

(EN) Original Language



ENGINEERING YOUR SUCCESS.

Introduction

This manual identifies the kits available for both preventative maintenance and unforeseen breakdown repairs on the Maxi and Maxiplus range of carbon dioxide polishers.

How to use this manual:

- 1 Identify the model of polisher from the rating plate.



- 2 Identify the filtration type connected to the inlet and outlet ports of the polisher.



Oil-X Plus filtration - Supplied with Maxi (up to serial number PC0766) and Maxiplus (up to serial number MPC0151)

Oil-X Evolution filtration - Supplied Maxi (from serial number PC0766 to date) and Maxiplus (from serial number MPC0151 to date)

Note. The serial number breaks specified are for guidance only. Always verify the filtration type prior to ordering any maintenance kit.








- 3 Turn to "Preventative Maintenance Kits" on page 3 for a full listing of scheduled maintenance kits available for the Maxi and Maxiplus range of polishers.
- 4 Turn to "Maxi Repair kits" on page 4 Maxi range of polishers.
- 5 Turn to "Maxiplus Repair Kits" on page 6 for a full listing of breakdown spares available for the Maxiplus range of polishers.
- 6 Turn to "Pre & Post filter Housings " on page 11 for a full listing of replacement pre-filters and after-filters.
- 7 All items identified with a kit number are available for order.
- 8 Page references in the comments column identify that component parts of the assembly are available.
- 9 Items not specified by a kit number are not available as a repair kit.
- 10 Items identified by PM are only available in the "Maxi & Maxiplus" on page 3.
- 11 Take careful note of the quantities supplied within each kit as, depending upon the number of chambers on the polisher, there may be a requirement to order multiple kits.
- 12 Kit numbers starting with the letter 'S' identify that the part requires a secondary operation (e.g painting, programming, pressure testing) prior to shipment. These items are not available off the shelf.













Carbon Dioxide Polisher




Cleaning

Clean the equipment with a damp cloth only. If required you may use a mild detergent, however do not use abrasives or solvents as they may damage the warning labels on the equipment.

Service Intervals

Component	Operation	Weekly	6 Months (4000 Hrs.)
System	Check for leaks.		
Polisher	Check the pressure gauge.		
Polisher	Check the pressure relief valve.		
Filters	Drain the filter bowls		
System	Recommended Service A Replace the filter elements. and mixed bed adsorption cartridges.		
Polisher	Inspect the columns and manifolds (internal and external)		
Filters	Inspect the filter housings (internal and external).		

Service	6 Months (4000 Hrs.)	12 Months (8000 Hrs.)	18 Months (12000 Hrs.)	24 Months (16000 Hrs.)	30 Months (20000 Hrs.)	36 Months (24000 Hrs.)	42 Months (28000 Hr)	48 Months (32000 Hrs.)	54 Months (36000 Hrs.)	60 Months (40000 Hrs.)	66 Months (44000 Hrs.)	72 Months (48000 Hrs.)
A												

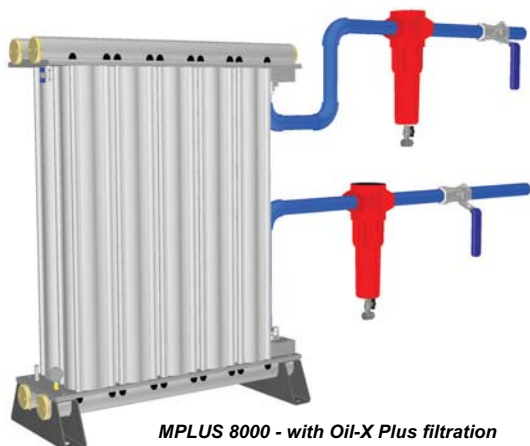
Key:					
	Check		Recommended Process		Preventative Maintenance



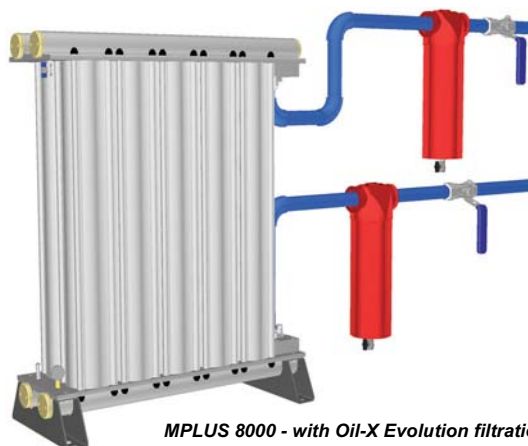
Servicereminder.com is a web based reminder service developed to track when service work is due to be carried out. This ensures that parts can be ordered in advance and that the service is carried out at the optimum time in accordance with the manufacturer's recommendations. This service is free to use, simply log on to www.servicereminder.com and select New User Registration.

Maxi & Maxiplus

Preventative Maintenance Kits



MPLUS 8000 - with Oil-X Plus filtration



MPLUS 8000 - with Oil-X Evolution filtration

20 Bar (300psi) - Required every 4000Hrs (6 months)

With Oil-X Plus filter elements



Model	Catalogue Number	Technical Reference
PCO2-1- 20 (300)	MAKPCO2-1-20	606071110
PCO2-2-20 (300)	MAKPCO2-2-20	606071120
PCO2-3-20 (300)	MAKPCO2-3-20	606071130
MPlus 4000 20 (300)	MAK-MPLUS4000-20	606071380
MPlus 6000 20 (300)	MAK-MPLUS6000-20	606071390
MPlus 8000 20 (300)	MAK-MPLUS8000-20	606071400
MPlus 10000 20 (300)	MAK-MPLUS10000-20	606071410

20 Bar (300psi) - Required every 4000Hrs (6 months)

With Oil-X Evolution filter elements



Model	Catalogue Number	Technical Reference
PCO2-0-20 (300)	MAKEPCO2-0-20	606071180
PCO2-1-20 (300)	MAKEPCO2-1-20	606071190
PCO2-2-20 (300)	MAKEPCO2-2-20	606071200
PCO2-3-20 (300)	MAKEPCO2-3-20	606071210
MPlus 4000 20 (300)	MAKE-MPLUS4000-20	606071340
MPlus 6000 20 (300)	MAKE-MPLUS6000-20	606071350
MPlus 8000 20 (300)	MAKE-MPLUS8000-20	606071360
MPlus 10000 20 (300)	MAKE-MPLUS10000-20	606071370

24 Bar (350psi) - Required every 4000Hrs (6 months)

With Oil-X Plus filter elements



Model	Catalogue Number	Technical Reference
PCO2-0-24 (350)	MAKPCO2-0-24	606071140
PCO2-1-24 (350)	MAKPCO2-1-24	606071150
PCO2-2-24 (350)	MAKPCO2-2-24	606071160
PCO2-3-24 (350)	MAKPCO2-3-24	606071170
MPlus 4000 24 (350)	MAK-MPLUS4000-24	606071300
MPlus 6000 24 (350)	MAK-MPLUS6000-24	606071310
MPlus 8000 24 (350)	MAK-MPLUS8000-24	606071320
MPlus 10000 24 (350)	MAK-MPLUS10000-20	606071330

- All kits include CO2 polisher elements, AA and AAR filter elements, manifold flange o-rings and sealant.
- 24 bar (350 psi) polishers are available with Oil-X Plus filter elements only.

Maxi Repair kits



Refer to the exploded image of the PCO2/3 on the opposite page:

Ref.	Kit number	Description	Kit Qty	Comments
1	S206030634	Single column outlet manifold	1	Used on the PCO2 / 0
2	S206030605	2 Column outlet manifold	1	Used on the PCO2 / 1
3	S206030603	4 Column outlet manifold	1	Used on the PCO2 / 2
4	S206030607	6 Column outlet manifold	1	Used on the PCO2 / 3
5	S206030633	Single column inlet manifold	1	Used on the PCO2 / 0
6	S206030604	2 Column inlet manifold	1	Used on the PCO2 / 1
7	S206030602	4 Column inlet manifold	1	Used on the PCO2 / 2
8	S206030606	6 Column inlet manifold	1	Used on the PCO2 / 3
9	S206030632	Single column extrusion	1	Used on the PCO2 / 0
10	S206030601	2 column extrusion	1	Used on the PCO2 / 1, PCO2 / 2, PCO2 / 3
11	R276070021	Support Feet	2	
12	R275110975	M6 X 10mm stainless steel socket head screw	20	
13	R275110852	M6 Stainless steel washer	40	
14	S276031377	1" BSPT Manifold flange	2	
15	S273104000	1" NPT Manifold flange	2	
16	S276031389	Blank Manifold Flange	2	
17	R275111740	M8 X 45mm Zinc plated hexagonal head screw	20	
18	R275110860	M8 Zinc plated washer	40	
19	R056030130	O-Ring BS4518 (0395-30)	30	
20	R276031070	40 Bar Pressure Gauge	2	
21	R276031193	1/8" BSP male -female union	2	Used on the PCO2 / 0
22	R276031093	1/8" BSPT -1/8" BSP adaptor	2	Used on the PCO2 / 1, PCO2 / 2, PCO2 / 3
23	R051190135	1/8" BSP Dowty seal	5	
24	R275113260	1/4" Stainless steel male - male nipple	2	
25	R271004745	1/4" BSPT Stainless steel female - female ball valve	2	
26	R051000574	BS257 high nitrile o-ring	30	Used on the PCO2 / 0
27	R051191060	BS4518 medium nitrile o-ring	30	Used on the PCO2 / 1, PCO2 / 2, PCO2 / 3
28	R275114222	M12 X 75 Stud Grade 10.8 Z.Plate	20	
29	R275114224	M12 Zinc plate grade 10 nut	40	
30	R278200178	M12 Zinc plate flat washer	40	
31	R276031097	M12 nut cap	20	
32	R274182500	Lifting Eye M16	2	Used on the PCO2 / 1, PCO2 / 2, PCO2 / 3
33	S276031387	1/4" BSPT 27 bar pressure relief valve	1	
34	R271004750	1" BSP threaded protection plug	2	
35	R456070054	Livery kit	5	

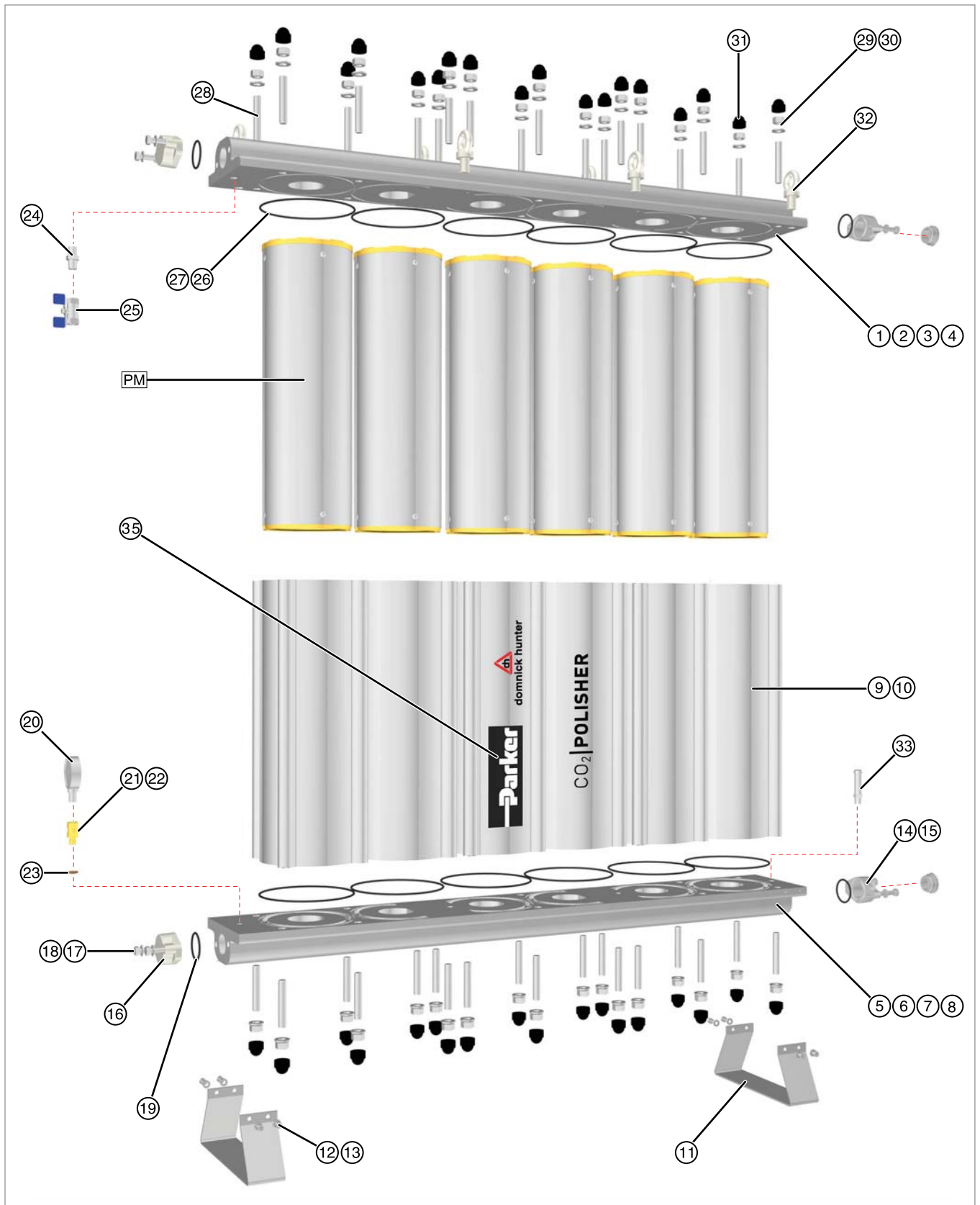


Image shows the PCO2/3

Maxiplus Repair Kits



Refer to the exploded image of the MPlus 8000 on the opposite page:

Ref.	Kit number	Description	Kit Qty	Comments
1	S456030282	MPlus 4000 outlet manifold assembly	1	Refer to "Outlet Manifold Assembly" on page 8 for component breakdown.
2	S456030284	MPlus 6000 outlet manifold assembly	1	
3	S456030286	MPlus 8000 outlet manifold assembly	1	
4	S456030288	MPlus 10000 outlet manifold assembly	1	
5	S456030281	MPlus 4000 inlet manifold assembly	1	Refer to "Inlet Manifold Assembly" on page 9 for component breakdown.
6	S456030283	MPlus 6000 inlet manifold assembly	1	
7	S456030285	MPlus 8000 inlet manifold assembly	1	
8	S456030287	MPlus 10000 inlet manifold assembly	1	
9	S456030280	Column assembly	1	Refer to "Column Assembly" on page 10 for component breakdown.
10	S272034201	2" BSP flange	2	MPlus 4000 and MPlus 6000
11	S272050001	2" NPT flange	2	MPlus 4000 and MPlus 6000
12	S272034202	2 1/2" BSP flange	2	MPlus 8000
13	S272050002	2 1/2" NPT flange	2	MPlus 8000
14	S276031189	3" BSP flange	2	MPlus 10000
15	S276031184	3" NPT flange	2	MPlus 10000
16	R051190262	0793-57 Viton o-ring	30	MPlus 4000, MPlus 6000 and MPlus 8000
17	R056030170	BS239 high nitrile o-ring	30	MPlus 10000
18	S276031387	1/4" BSPT 27 bar pressure relief valve	1	
19	R271004240	2" Blanking plug	2	MPlus 4000 and MPlus 6000
20	R271004250	2 1/2" Blanking plug	2	MPlus 8000
21	R271004260	3" Blanking plug	2	MPlus 10000
22	R456070054	Livery Kit	5	

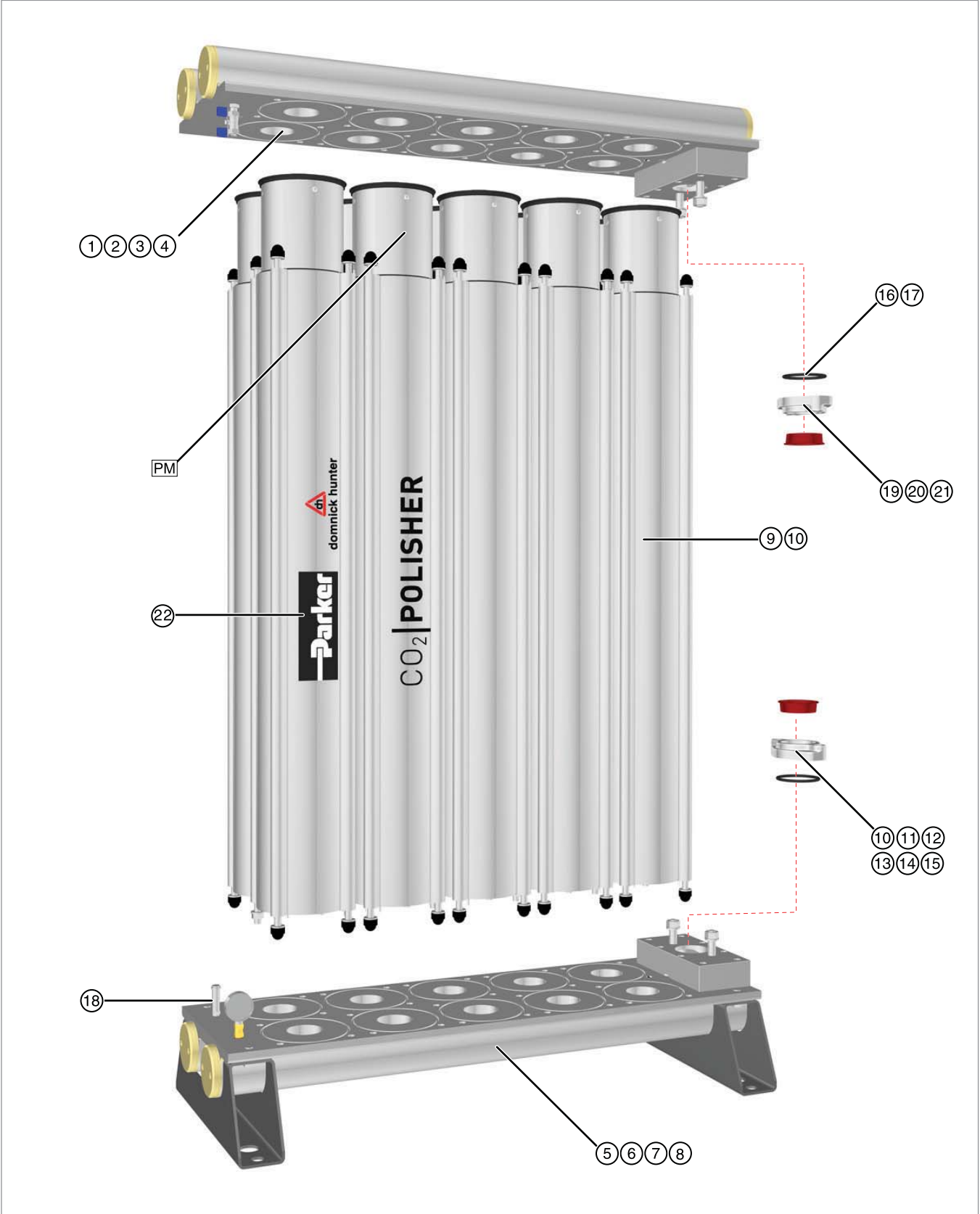
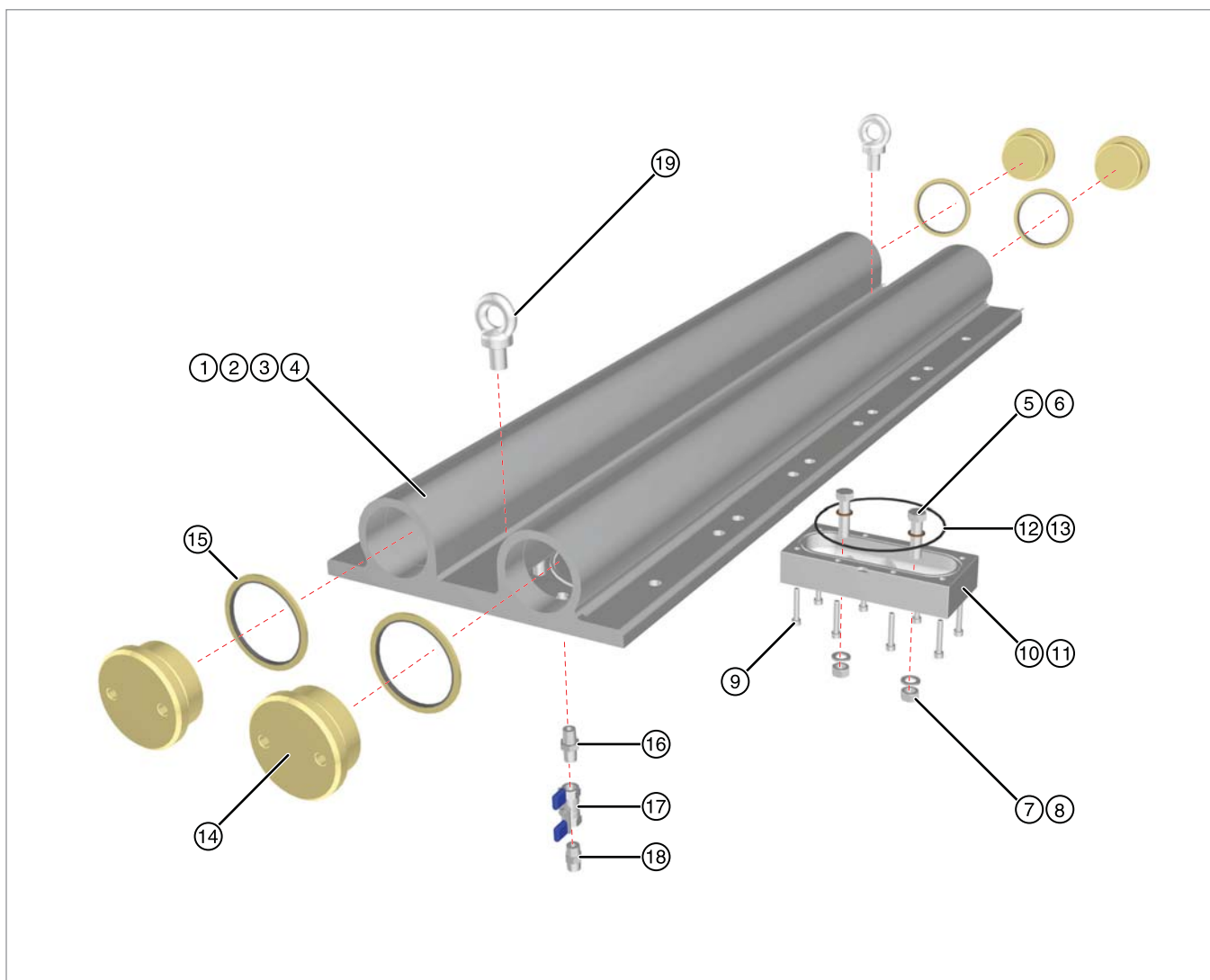


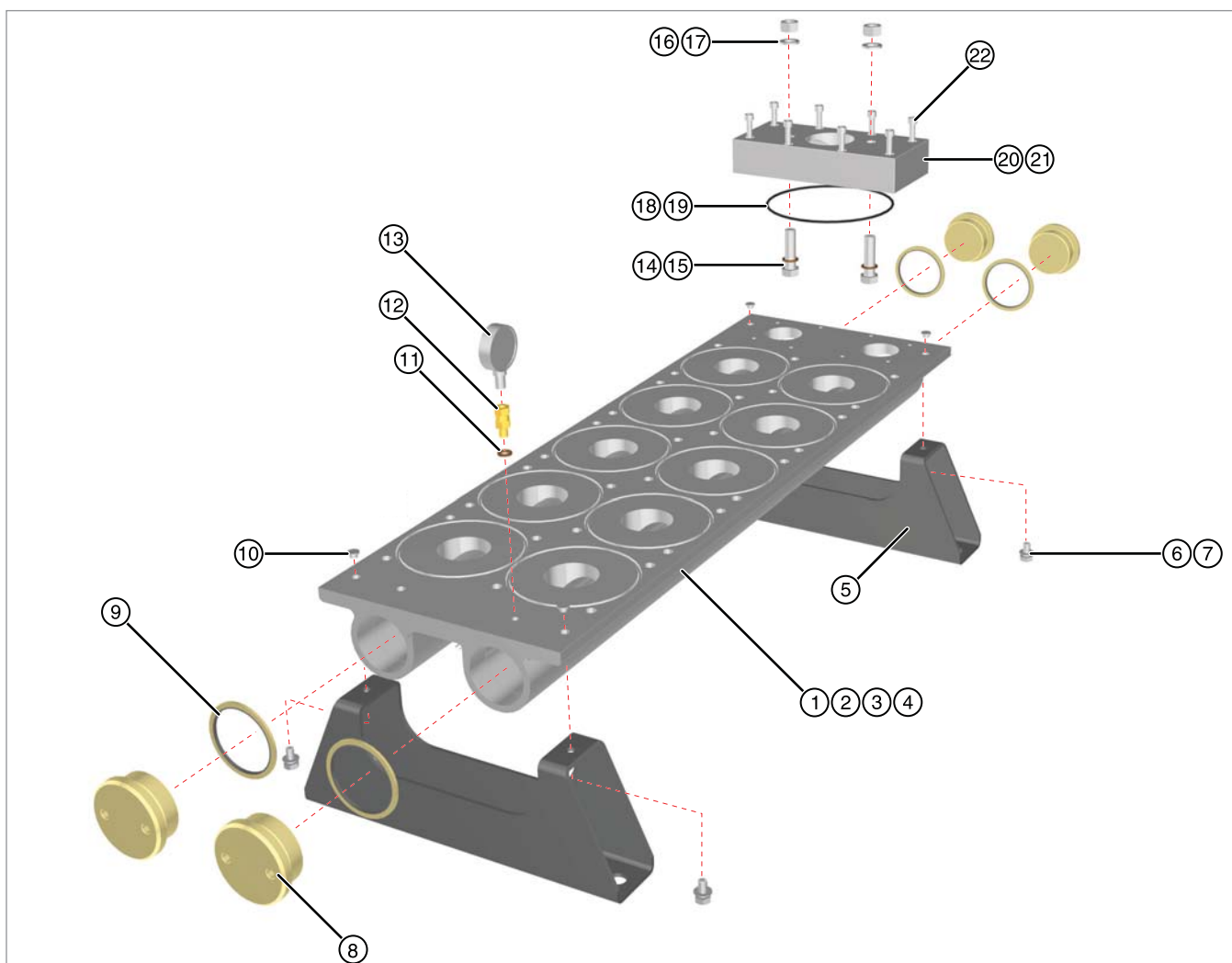
Image shows the MPlus 8000

Outlet Manifold Assembly



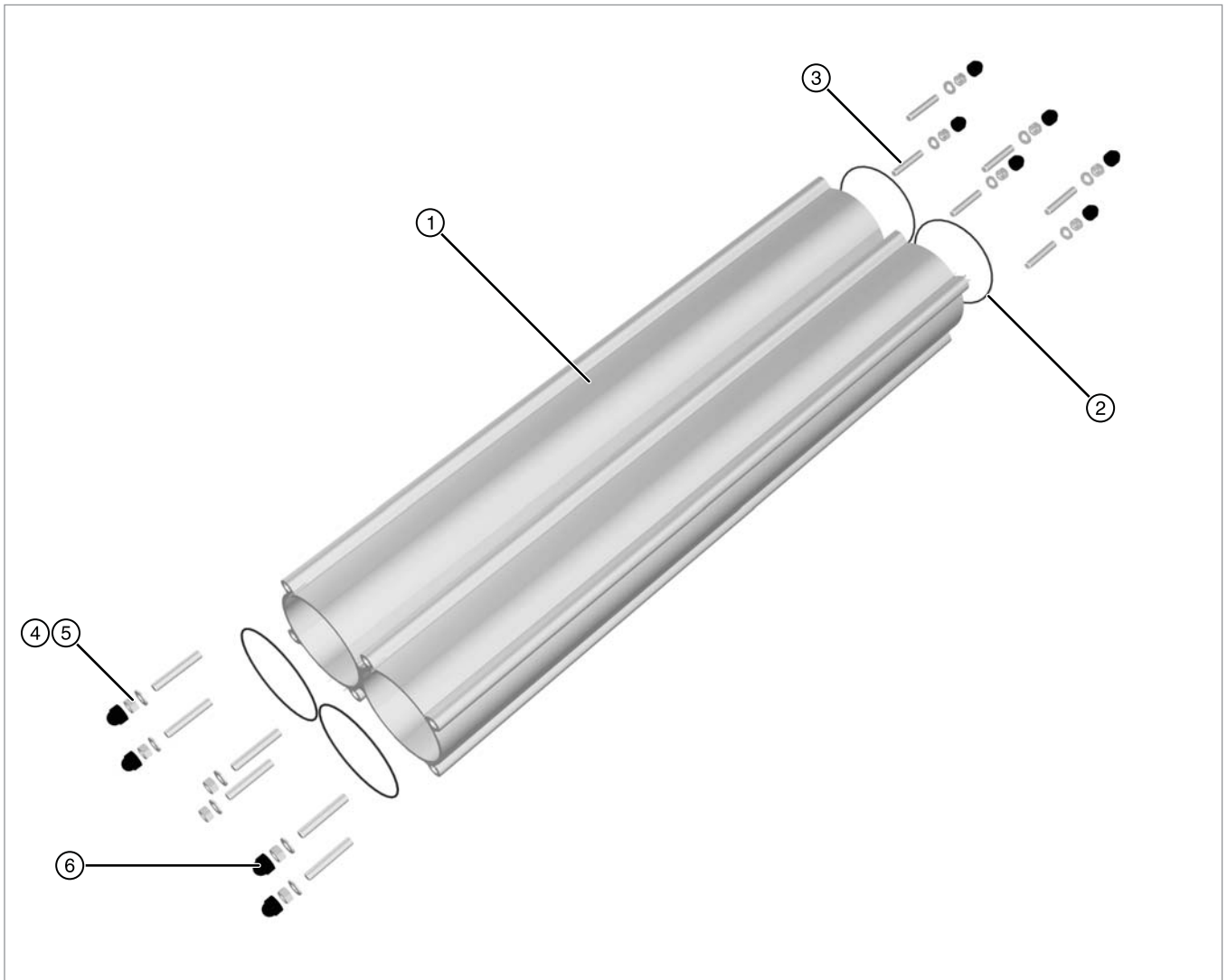
Ref.	Kit number	Description	Kit Qty	Comments
1	S206030622	3 Column outlet manifold	1	
2	S206030624	4 Column outlet manifold	1	
3	S206030626	5 Column outlet manifold	1	
4	S206030628	6 Column outlet manifold	1	
5	R275114208	M16 x 60mm bolt	20	
6	R051190160	3/8 BSP Dowty seal	5	
7	R275114210	M16 stainless steel nut	40	
8	R275114209	M16 stainless steel washer	40	
9	R275113650	M8 x 50mm zinc plated socket head screw	20	
10	S276031181	Inlet / outlet interface plate	1	MPlus 4000, MPlus 6000 and MPlus 8000
11	S276031185	3" Inlet / outlet interface plate	1	MPlus 10000
12	R056030150	BS262 high nitrile o-ring	30	MPlus 4000, MPlus 6000 and MPlus 8000
13	R056030160	BS264 high nitrile o-ring	30	MPlus 10000
14	S278200813	G2 1/2 Manifold plug	2	
15	R051190990	G2 1/2 Bonded washer	5	
16	R275113260	1/4" Male - male nipple	2	
17	R271004745	1/4" BSPT female - female stainless steel ball valve	2	
18	R275101760	1/4" BSPT - 1/4" NPT nipple	2	
19	R276201270	M16 collar eye bolt	2	

Inlet Manifold Assembly



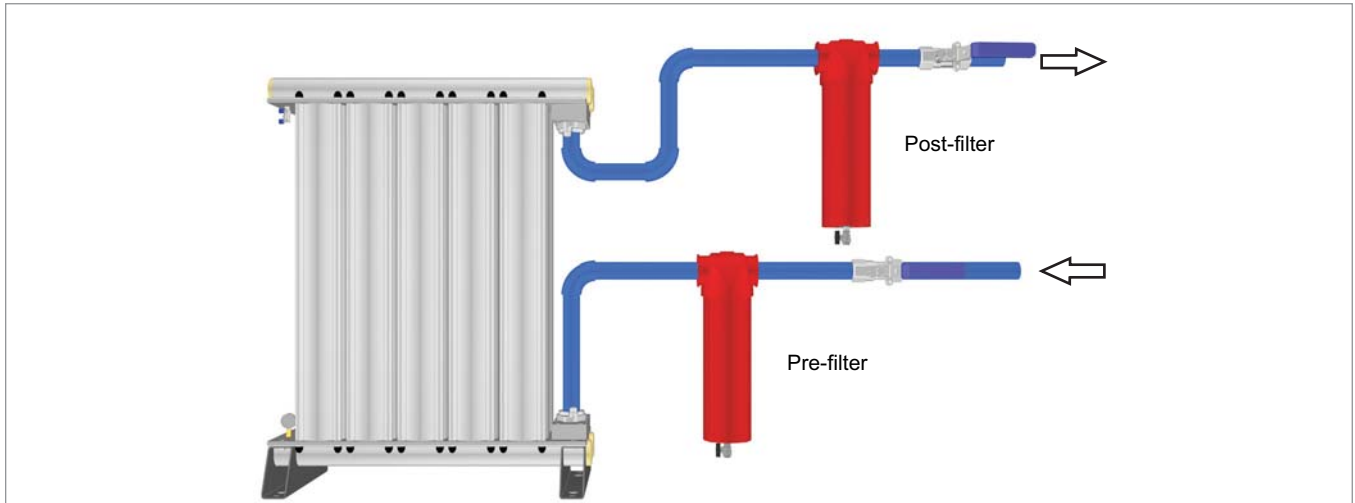
Ref.	Kit number	Description	Kit Qty	Comments
1	S206030621	3 Column inlet manifold	1	
2	S206030623	4 Column inlet manifold	1	
3	S206030625	5 Column inlet manifold	1	
4	S206030627	6 Column inlet manifold	1	
5	R278200814	Feet	2	
6	R275114211	M10 x 20mm stainless steel bolt	20	
7	R275110874	M10 stainless steel bolt	20	
8	S278200813	G2 1/2 Manifold plug	2	
9	R056030150	BS262 high nitrile o-ring	30	
10	R276070025	M10 push in blanking plug	10	
11	R051190135	1/8" BSP Dowty seal	5	
12	R276031193	1/8" BSP male - female union	2	
13	R276031070	40 bar pressure gauge	2	
14	R275114208	M16 x 60mm bolt	20	
15	R051190160	3/8 BSP Dowty seal	5	
16	R275114210	M16 stainless steel nut	40	
17	R275114209	M16 stainless steel washer	40	
18	R056030150	BS262 high nitrile o-ring	30	MPlus 4000, MPlus 6000 and MPlus 8000
19	R056030160	BS264 high nitrile o-ring	30	MPlus 10000
20	S276031181	Inlet / outlet interface plate	1	MPlus 4000, MPlus 6000 and MPlus 8000
21	S276031185	3" Inlet / outlet interface plate	1	MPlus 10000
22	R275113650	M8 x 50mm zinc plated socket head screw	20	

Column Assembly



Ref.	Kit number	Description	Kit Qty	Comments
1	S206030620	Twin column extrusion	1	
2	R051191060	BS4518 medium nitrile o-ring	30	
3	R275114222	M12 x 75 Grade 10.8 zinc plated studding	20	
4	R275114224	M12 grade 10 zinc plated nut	40	
5	R275110875	M12 stainless steel washer	40	
6	R276031097	M12 nut cap	20	

Pre & Post filter Housings



Model	Pressure	Pre-filter		Post-filter	
		Kit Number	Description	Kit Number	Description
PCO2/0	20.7 bar g	616070209	AA020EB PCO2	616070109	AAR020EB PCO2
	24.1 bar g	616070053	IP50 AA-0285G PCO2	616070054	IP50 AAR-0285G PCO2
	300 psi g	686070209	AA020EN PCO2	686070109	AAR020EN PCO2
	350 psi g	686070027	IP50 AA-0285G NPT PCO2	686070028	IP50 AAR-0285G NPT PCO2
PCO2/1	20.7 bar g	616070210	AA025EB PCO2	616070110	AAR025EB PCO2
	24.1 bar g	616070053	IP50 AA-0285G PCO2	616070054	IP50 AAR-0285G PCO2
	300 psi g	686070210	AA025EN PCO2	686070110	AAR025EN PCO2
	350 psi g	686070027	IP50 AA-0285G NPT PCO2	686070028	IP50 AAR-0285G NPT PCO2
PCO2/2	20.7 bar g	616070211	AA030EB PCO2	616070111	AAR030EB PCO2
	24.1 bar g	616070053	IP50 AA-0285G PCO2	616070054	IP50 AAR-0285G PCO2
	300 psi g	686070211	AA030EN PCO2	686070111	AAR030EN PCO2
	350 psi g	686070027	IP50 AA-0285G NPT PCO2	686070028	IP50 AAR-0285G NPT PCO2
PCO2/3	20.7 bar g	616070211	AA030EB PCO2	616070111	AAR030EB PCO2
	24.1 bar g	616070053	IP50 AA-0285G PCO2	616070054	IP50 AAR-0285G PCO2
	300 psi g	686070211	AA030EN PCO2	686070111	AAR030EN PCO2
	350 psi g	686070027	IP50 AA-0285G NPT PCO2	686070028	IP50 AAR-0285G NPT PCO2
Mplus 4000	20.7 bar g	616070212	AA040HB PCO2	616070112	AAR040HB PCO2
	24.1 bar g	616070055	IP50 AA-0965G PC02	616070056	IP50 AAR-0965G PC02
	300 psi g	686070212	AA040HN PC02	686070112	AAR040HN PC02
	350 psi g	686070029	IP50 AA-0965G NPT PCO2	686070030	IP50 AAR-0965G NPT PCO2
Mplus 6000	20.7 bar g	616070213	AA045HB PCO2	616070113	AAR045HB PCO2
	24.1 bar g	616070055	IP50 AA-0965G PC02	616070056	IP50 AAR-0965G PC02
	300 psi g	616070213	AA045HB PCO2	616070113	AAR045HB PCO2
	350 psi g	686070029	IP50 AA-0965G NPT PCO2	686070030	IP50 AAR-0965G NPT PCO2
Mplus 8000	20.7 bar g	616070214	AA050IB PCO2	616070114	AAR050IB PCO2
	24.1 bar g	616070055	IP50 AA-0965G PC02	616070056	IP50 AAR-0965G PC02
	300 psi g	686070214	AA050IN PC02	686070114	AAR050IN PC02
	350 psi g	686070029	IP50 AA-0965G NPT PCO2	686070030	IP50 AAR-0965G NPT PCO2
Mplus 10000	20.7 bar g	616070215	AA055JB PCO2	616070115	AAR055JB PCO2
	24.1 bar g	616070055	IP50 AA-0965G PC02	616070056	IP50 AAR-0965G PC02
	300 psi g	686070215	AA055JN PC02	686070115	AAR055JN PC02
	350 psi g	686070029	IP50 AA-0965G NPT PCO2	686070030	IP50 AAR-0965G NPT PCO2

Parker Worldwide

AE – UAE, Dubai
Tel: +971 4 8127100
parker.me@parker.com

AR – Argentina, Buenos Aires
Tel: +54 3327 44 4129

AT – Austria, Wiener Neustadt
Tel: +43 (0)2622 23501-0
parker.austria@parker.com

AT – Eastern Europe, Wiener Neustadt
Tel: +43 (0)2622 23501 900
parker.easteurope@parker.com

AU – Australia, Castle Hill
Tel: +61 (0)2-9634 7777

AZ – Azerbaijan, Baku
Tel: +994 50 2233 458
parker.azerbaijan@parker.com

BE/LU – Belgium, Nivelles
Tel: +32 (0)67 280 900
parker.belgium@parker.com

BR – Brazil, Cachoeirinha RS
Tel: +55 51 3470 9144

BY – Belarus, Minsk
Tel: +375 17 209 9399
parker.belarus@parker.com

CA – Canada, Milton, Ontario
Tel: +1 905 693 3000

CH – Switzerland, Etoy
Tel: +41 (0) 21 821 02 30
parker.switzerland@parker.com

CL – Chile, Santiago
Tel: +56 2 623 1216

CN – China, Shanghai
Tel: +86 21 5031 2525

CZ – Czech Republic, Klecany
Tel: +420 284 083 111
parker.czechrepublic@parker.com

DE – Germany, Kaarst
Tel: +49 (0)2131 4016 0
parker.germany@parker.com

DK – Denmark, Ballerup
Tel: +45 43 56 04 00
parker.denmark@parker.com

ES – Spain, Madrid
Tel: +34 902 33 00 01
parker.spain@parker.com

FI – Finland, Vantaa
Tel: +358 (0)20 753 2500
parker.finland@parker.com

FR – France, Contamine s/Arve
Tel: +33 (0)4 50 25 80 25
parker.france@parker.com

GR – Greece, Athens
Tel: +30 210 933 6450
parker.greece@parker.com

HK – Hong Kong
Tel: +852 2428 8008

HU – Hungary, Budapest
Tel: +36 1 220 4155
parker.hungary@parker.com

IE – Ireland, Dublin
Tel: +353 (0)1 466 6370
parker.ireland@parker.com

IN – India, Mumbai
Tel: +91 22 6513 7081-85

IT – Italy, Corsico (MI)
Tel: +39 02 45 19 21
parker.italy@parker.com

JP – Japan, Tokyo
Tel: +(81) 3 6408 3901

KR – South Korea, Seoul
Tel: +82 2 559 0400

KZ – Kazakhstan, Almaty
Tel: +7 7272 505 800
parker.easteurope@parker.com

LV – Latvia, Riga
Tel: +371 6 745 2601
parker.latvia@parker.com

MX – Mexico, Apodaca
Tel: +52 81 8156 6000

MY – Malaysia, Shah Alam
Tel: +60 3 7849 0800

NL – The Netherlands, Oldenzaal
Tel: +31 (0)541 585 000
parker.nl@parker.com

NO – Norway, Ski
Tel: +47 64 91 10 00
parker.norway@parker.com

NZ – New Zealand, Mt Wellington
Tel: +64 9 574 1744

PL – Poland, Warsaw
Tel: +48 (0)22 573 24 00
parker.poland@parker.com

PT – Portugal, Leca da Palmeira
Tel: +351 22 999 7360
parker.portugal@parker.com

RO – Romania, Bucharest
Tel: +40 21 252 1382
parker.romania@parker.com

RU – Russia, Moscow
Tel: +7 495 645-2156
parker.russia@parker.com

SE – Sweden, Spånga
Tel: +46 (0)8 59 79 50 00
parker.sweden@parker.com

SG – Singapore
Tel: +65 6887 6300

SK – Slovakia, Banská Bystrica
Tel: +421 484 162 252
parker.slovakia@parker.com

SL – Slovenia, Novo Mesto
Tel: +386 7 337 6650
parker.slovenia@parker.com

TH – Thailand, Bangkok
Tel: +662 717 8140

TR – Turkey, Istanbul
Tel: +90 216 4997081
parker.turkey@parker.com

TW – Taiwan, Taipei
Tel: +886 2 2298 8987

UA – Ukraine, Kiev
Tel +380 44 494 2731
parker.ukraine@parker.com

UK – United Kingdom, Warwick
Tel: +44 (0)1926 317 878
parker.uk@parker.com

US – USA, Cleveland
Tel: +1 216 896 3000

VE – Venezuela, Caracas
Tel: +58 212 238 5422

ZA – South Africa, Kempton Park
Tel: +27 (0)11 961 0700
parker.southafrica@parker.com

European Product Information Centre

Free phone: 00 800 27 27 5374

(from AT, BE, CH, CZ, DE, DK, ES, FI, FR, IE, IT, NL, NO, PL, PT, RU, SE, UK, ZA)

