

Installation- and Maintenance Manual

SEPREMIUM 4.5i



SAFETY AND PROPER USAGE

To ensure safe and enduring performance of this product, you must comply strictly with the instructions enclosed, herein. Non-compliance with instructions or improper handling of the product will void your warranty! Usage of this product in conditions not specified in this manual or in contrary to the instructions hereby provided is considered IMPROPER. The manufacturer will not be held liable for any damages resulting from improper use of the product.

SAFETY & WARNING INSTRUCTIONS

- Observe valid and generally accepted safety rules when planning, installing, and using this product.
- Take proper measures to prevent unintentional operation of the product or damage to it.
- Do not attempt to disassemble this product or lines in the system while they are under pressure.
- Always depressurise the compressed air system before working on the system.

It is important that personnel use safe working practices and observe all regulations and legal requirements for safety when operating this product. When handling, operating, or carrying out maintenance on this product, personnel must employ safe engineering practices and observe all local health & safety requirements & regulations. International users refer to regulations that prevail within the country of installation. Most accidents, which occur during the operation and maintenance of machinery, are the result of failure to observe basic safety rules or precautions. An accident can often be avoided by recognising a situation that is potentially dangerous. Improper operation or maintenance of this product could be dangerous and result in an accident, causing injury or death. The manufacturer cannot anticipate every possible circumstance, which may represent a potential hazard. The WARNINGS in this manual cover the most common potential hazards and are therefore not all-inclusive. If the user employs an operating procedure, an item of equipment or a method of working which is not specifically recommended by the manufacturer he must ensure that the product will not be damaged or made unsafe and that there is no risk to persons or property.

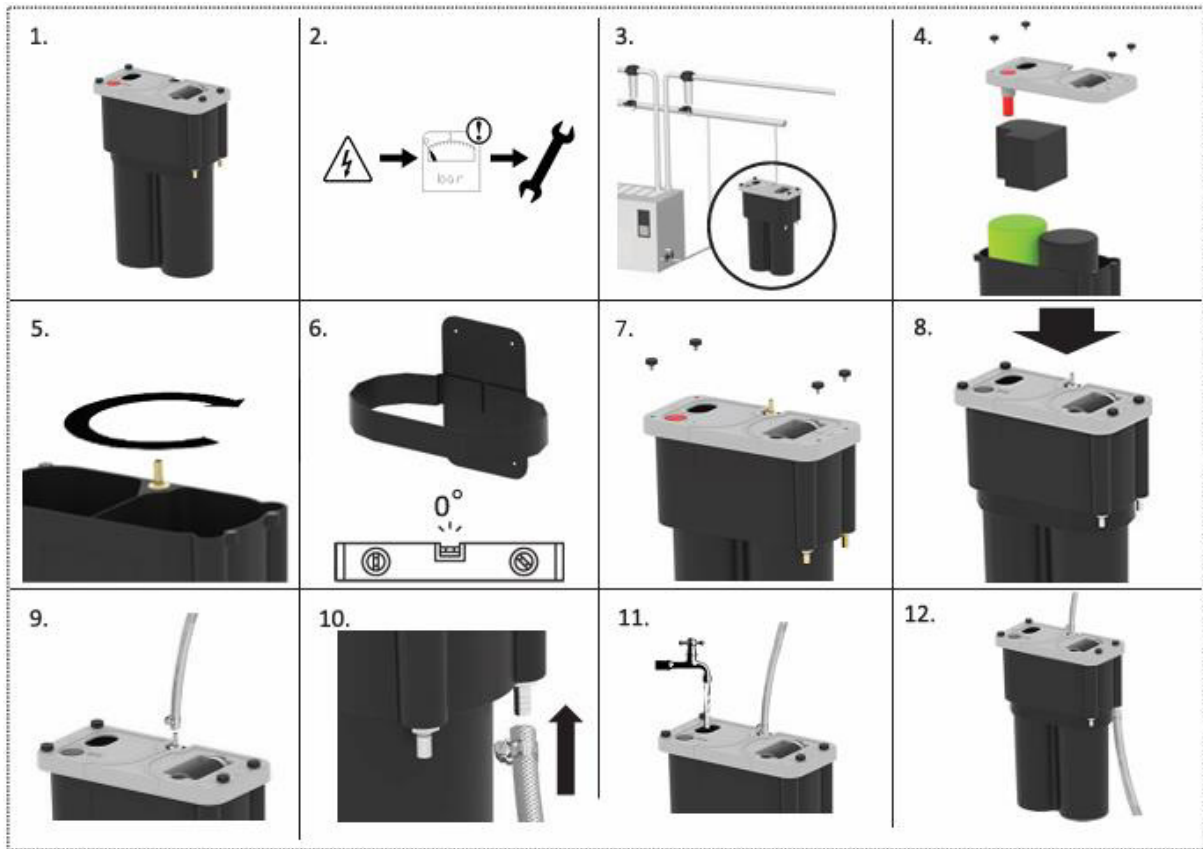


CAUTION: NEVER CHANGE ORIGINAL COMPONENTS WITH ALTERNATIVES

Installation Instructions

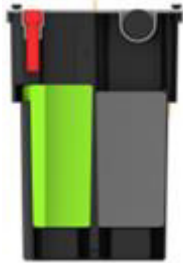
Note: Before using this product, make sure it complies with your request and that it suits your application!

1. Unpack the unit and visually inspect for any transport damage incurred after leaving our factory.
2. Depressurise the system before installation or maintenance is carried out!
3. Locate a suitable point in your compressor room to place your Oil/Water separator. This point must be near a suitable sewage point. The unit is designed to easily fit against a wall.
4. Remove the lid by unscrewing the four screws. Take the foam, filter element and carbon element out of the housing.
**Protective gloves are included.*
***We recommend in this stage to pre-soak the active carbon element for 24 hrs.*
5. Screw the inlet nipple with rubber o-ring into its marked location using a 22 mm wrench.
Do not overtighten!
6. Install the unit on a flat level surface and protect it against overturn. If you use the optional mounting bracket, make sure to install it level on a wall or other suitable structure.
Make sure the bracket is level!
7. Place the filter and carbon element. Make sure the carbon element rests on the bottom of the tower by pushing (and holding) it down. Replace the foam, lid and screws.
8. Place the Oil/Water separator in the bracket.
9. Connect the condensate collection pipe to the inlet of the Oil/Water separator.
10. Connect the outlet of the separator to a suitable sewage point. Make sure the condensate always flows down! **Do not reduce the 1/2" outlet size. Use the supplied 1/2" adapter and corresponding tube size!*
11. Fill the unit with water from tower 1 until both towers are filled and water flows out of the outlet point.
12. Your Oil/Water separator is ready for operation!
**We recommend that initially a daily check is made on the quality of the output from your Oil/Water separator.*
After a day or so, the output should be clear when viewed using the Sample bottle.

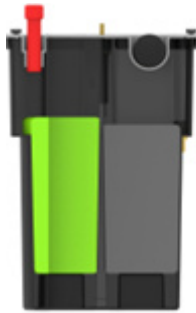


DEVICE OPERATION

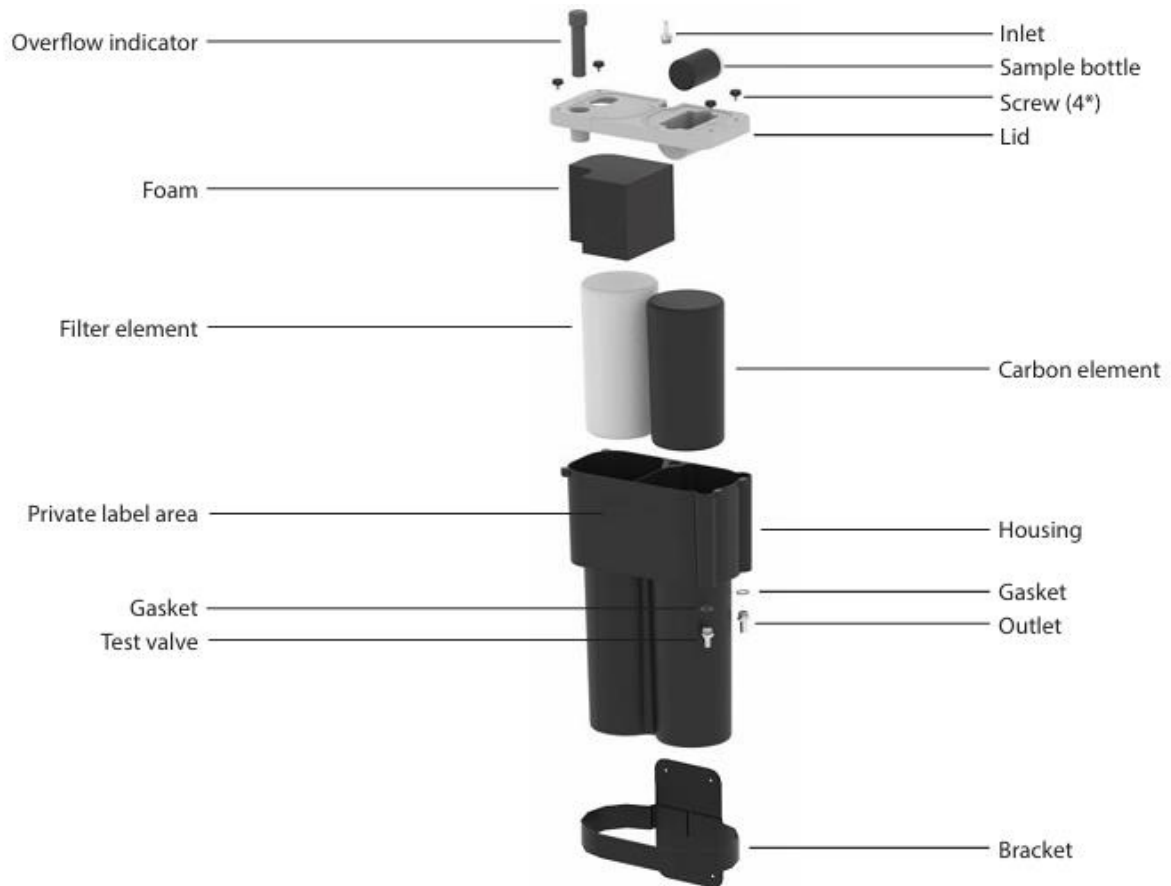
After installing the Oil/Water separator, the elements are clean and ready to perform.



The red overflow indicator will be up to indicate the elements are completely saturated and an overflow can occur due to blockage of the elements caused by saturation, or that the outlet is blocked.



List of components



SAMPLE BOTTLE INSTRUCTIONS

1. Take the Sample Bottle out of its container and screw off the lid.
2. Hold the Sample Bottle under the test valve and open the test valve.
3. Fill the Sample Bottle to just above the top sticker, and close the test valve. Screw the lid back on the Sample Bottle.
4. By comparing the cloudiness of the condensate with the shaded area of the labels on the Sample Bottle, you can visually determine the potential oil content in the condensate.

How to perform the check:

- a. Turn your Sample Bottle 90° and rotate the bottle until you have a part of the labels above and a part of the labels in the condensate level. This way you can compare the shaded area of the labels and the clarity of the condensate simultaneously.
- b. If the cloudiness of the condensate is more than the background shaded area of the 20PPM label, and you can no longer see a difference between the shaded area of the label background and the cloudiness of the condensate, your elements may be saturated and may need replacing.

Note: This test is a visual “indication only” test. To determine the exact oil content in your condensate sample, a laboratory test is required. This service is available through the manufacturer also.

5. Pour the condensate back into the oil/water separator.
6. Clean and dry the sample bottle with a cloth and screw the lid back on the Sample Bottle.
7. Place the sample bottle back into its container and back in the lid of the oil/water separator. You can use the same Sample Bottle for future checks.

1.



2.



3.



4(a).



4(b).



5.



6.



7.



Technical data

	Sepremium 4.5i
Max. oil absorption of the elements	approx. 4 liters
Filter element	1
Carbon element	1
max. compressor capacity (based on an 8-hour shift)	4,5 m ³ /min.
Inlet connection	1/2" BSP, with 10 mm hose connector adapter
Outlet connection	1/2" BSP, with 14mm hose connector adapter
Test procedure	Yes
Test procedure	PPC
Housing color	Black
Lid color	Beige
Sample bottles included	Yes
Target oil residue output value	< 5 ppm
Mineral lubricants	Yes
Synthetic lubricants	Yes
Stable condensate emulsions	yes, please contact pure!
Polyglycol	yes, please contact pure!
Hose connections for inlet and outlet	included
Product weight (empty, incl. bracket)	9,5 kg
Product weight (filled with water, incl. bracket)	18 kg

Maintenance instructions

1. Unpack the elements and visually inspect for any transport damage incurred after leaving our factory.
2. Depressurise the system before installation or maintenance is carried out!
3. Remove the lid by unscrewing the four lid fixing screws, also remove the depressurising foam.
4. Pull up the saturated filter element out of the housing and let the water drip out.
5. After most of the water has dripped out of the element, lift the saturated element out of the housing and place it in the plastic bag included in the box.
6. Pull up the saturated carbon element out of the housing and let the water drip out.
7. After most of the water has dripped out of the element, lift the saturated element out of the housing and place it in the plastic bag included in the box.
8. Empty and clean the housing of any remaining condensate residue.
9. Insert the new filter element in the housing (left tower 1). Push the element all the way down.
10. Insert the new carbon element in the housing (right tower 2). Push the element all the way down.
11. Replace the foam and lid and tighten the four lid fixing screws.
12. Fill the unit with water from tower 1 until both towers are filled and water flows out of the outlet point.

Your Oil/Water Separator is ready for operation!

Tip: we recommend that initially a daily check is made on the quality of the output from your Oil/Water separator.

Tip: we suggest replacing both elements simultaneously!

