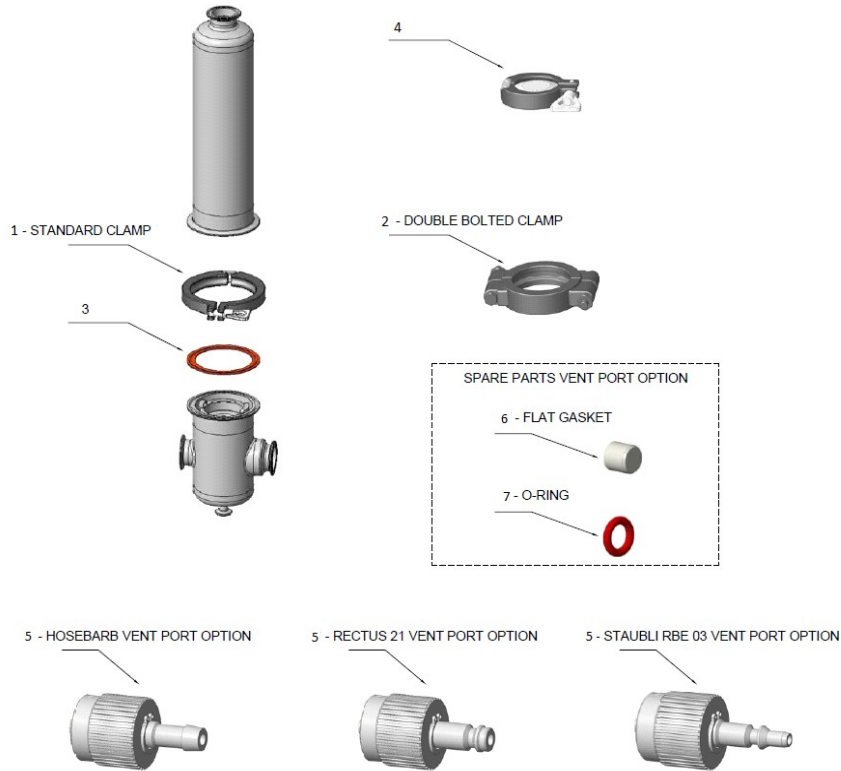


SPARE PARTS LIST

POS	DESCRIPTION	MATERIAL	PART CODE
1	STANDARD CLAMP	AISI 304	XTCSS58AL1
2	DOUBLE BOLT CLAMP	AISI 304	XTCSS58AL2
3	GASKET	SILICONE	XGKSI58AL
	GASKET	EPDM	XGKEP58AL
	GASKET	VITON	XGKVI58AL
	GASKET	FEP ENC. SILICONE	XGKPT58AL
4	TRI-CLAMP BLANK 1.5" C/W STANDARD CLAMP	AISI 306L	XAKSS06AL3
	TRI-CLAMP BLANK 0.5" C/W STANDARD CLAMP	AISI 306L	XAKSS04AL1
5	HOSEBARB VENT OPTION	AISI 316L	XVASS30AL1
	RECTUS VENT OPTION	AISI 316L	XVASS30AL2
	STAUBLI VENT OPTION	AISI 316L	XVASS30AL3
6	FLAT GASKET (VENT VALVE SPARES)	PTFE	XGKPT31AL
7	O-RING Ø1.78X5.28mm (VENT VALVE SPARES)	VITON	XORVI31AL

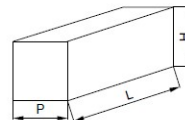


ACCESSORIES FOR VENT AND DRAIN PORTS

ITEM	DESCRIPTION:	PART NUMBER
	0-10 BAR PRESSURE GAUGE WITH 1.5" TRI-CLAMP CONNECTION C/W SANITARY VALVE, CLAMP & GASKET	XPGSS06AL7
	0-10 BAR DIAPHRAGM PRESSURE GAUGE WITH 1.5" TRI-CLAMP CONNENTION C/W CLAMP & GASKET	XPGSS06AL8
	MANUAL BALL VALVE 0.5" TRI-CLAMP C/W CLAMP & GASKET	XVASS04AL2
	SANITARY DRAIN VALVE 0.5" TRI-CLAMP TO HOSEBARB C/W CLAMP & SEAL	XVASS04AL3
	SANITARY DRAIN VALVE 0.5" TRI-CLAMP TO STAUBLI RBE03 C/W CLAMP & SEAL	XVASS04AL4
	SANITARY DRAIN VALVE 0.5" TRI-CLAMP TO RECTUS 21 C/W CLAMP & SEAL	XVASS04AL5

PACKAGING

VERSION	CARTRIDGE NUMBER X HEIGHT:	1 X 5" (K)	1 X 10"	1 X 20"	1 X 30"
	BOWL WEIGHT [KG]	0.7	1.1	1.9	2.7
WITHOUT VENT VALVE	TOTAL NET WEIGHT [KG]	2.6	3.0	4.0	5.0
	TOTAL WEIGHT PACKED [KG]	3.6	4.0	5.0	6.0
	PACKAGING SIZE [CM] (LxPxH)	44x13x15	69x13x15	94x13x15	115x25x15
VERSION WITH INTEGRATED VENT VALVE	TOTAL NET WEIGHT [KG]	2.6	3.0	4.0	5.0
	TOTAL WEIGHT PACKED [KG]	3.6	4.0	5.0	6.0
	PACKAGING SIZE [CM] (LxPxH)	70x25x15	70x25x15	90x25x15	115x25x15



* MULTIPLE CHANGES, FOR CLARITY ON EXACT CHANGES REFER TO IMPLEMENTED CHANGE SECTION ON THE ECO.

MATERIAL	SCALE	NAME	DRAWN	CHECKED	APPROVED	TITLE
GEN. ARRGT.	2:7	PC	JG	DF		PHS CODE 7 GAS HOUSINGS
		DATE	30-Jul-2018	31-Jul-2018	31-Jul-2018	

ECO No.	0287279	REV No.	C
DO NOT SCALE - IF IN DOUBT ASK			
PLEASE CONSIDER THE ENVIRONMENT PRIOR TO PRINTING THIS DRAWING. BASED ON BS 8888 DIMENSIONS IN MILLIMETRES			
GENERAL TOLERANCES UNLESS OTHERWISE STATED			
MACHINED DIMENSIONS			
JX	±0.13	UP TO 300	±0.3
X	±0.25	OVER 300 TO 600	±0.5
POSITIONAL TOLERANCE			
PLAIN HOLES	Ø0.13		
TAPPED HOLES	Ø0.25		
CONCENTRICITY TOLERANCE	0.13 TIR		
MACHINED SURFACES INDICATED THIS SURFACE TEXTURE TO BS 1134 VALUES IN MICROMETRES			
ANGLES ±1/2° (EXCEPT CHAMFERS)			
METRIC THREADS TO BS 3643 MED. CLASS			
EXTERNAL 6g	INTERNAL 6H		
PIPE THREADS PRESSURE TIGHT TO BS 21			
SHEET METALWORK & FABRICATIONS SHEET METALWORK DIMENSIONS			
UP TO 500	±1.0		
OVER 500 TO 1000	±1.5		
OVER 1000	±2		
FABRICATED PARTS DIMENSIONS			
UP TO 500	±2		
OVER 500 TO 1000	±4		
OVER 1000	±6		
POSITIONAL TOLERANCE FOR PLAIN & TAPPED HOLES			
UP TO 500	Ø1.0		
OVER 500	Ø2.0		
Parker Hannifin Manufacturing Ltd dormick hunter Durham Road Birtley, Co. Durham DH3 2SF, England phone +44 (0)191 4105121 fax +44 (0)191 4105312 email: dhprocess@parker.com www.parker.com/processfiltration			
THIS DOCUMENT CONTAINS INFORMATION THAT IS CONFIDENTIAL AND PROPRIETARY TO PARKER HANNIFIN MANUFACTURING LTD. ("PARKER"). THIS DOCUMENT IS FURNISHED ON THE UNDERSTANDING THAT THE DOCUMENT AND THE INFORMATION IT CONTAINS WILL NOT BE COPIED OR DISCLOSED TO OTHERS OR USED FOR ANY OTHER PURPOSE OTHER THAN CONDUCTING BUSINESS WITH PARKER, AND WILL BE RETURNED AND ALL FURTHER USE DISCONTINUED UPON REQUEST BY PARKER. THE RECIPIENT OF THIS DOCUMENT THROUGH ITS OWN ANALYSIS AND TESTING IS SOLELY RESPONSIBLE FOR MAKING THE FINAL SELECTION OF THE APPLICABLE SYSTEM AND COMPONENTS AND ASSURING THAT ALL PERFORMANCE, ENDURANCE, MAINTENANCE, SAFETY AND WARNING REQUIREMENTS OF THE APPLICATION ARE MET. COPYRIGHT PARKER. YEAR OF COPYRIGHT IS FIRST YEAR INDICATED ON THIS DOCUMENT. ALL RIGHTS RESERVED.			
DRG No.			SHEET
179502681			2 / 2
©2019 A2			