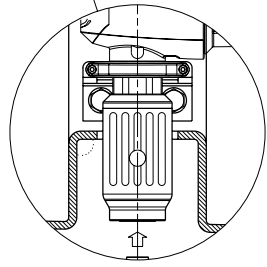
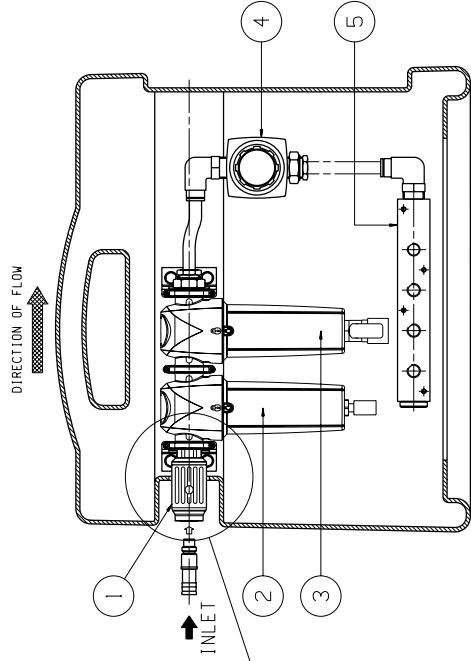


DO NOT SCALE IF IN DOUBT ASK

BASED ON B.S. 8888

DIMENSIONS IN MILLIMETRES



DETAIL OF INLET CONNECTION
SCALE 1:2

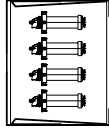
SECTION A-A

SPECIFICATION:

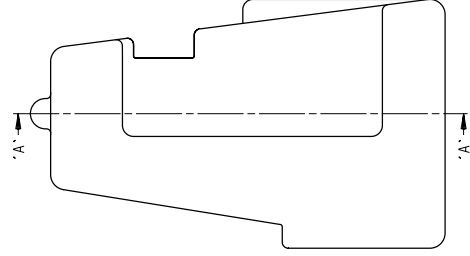
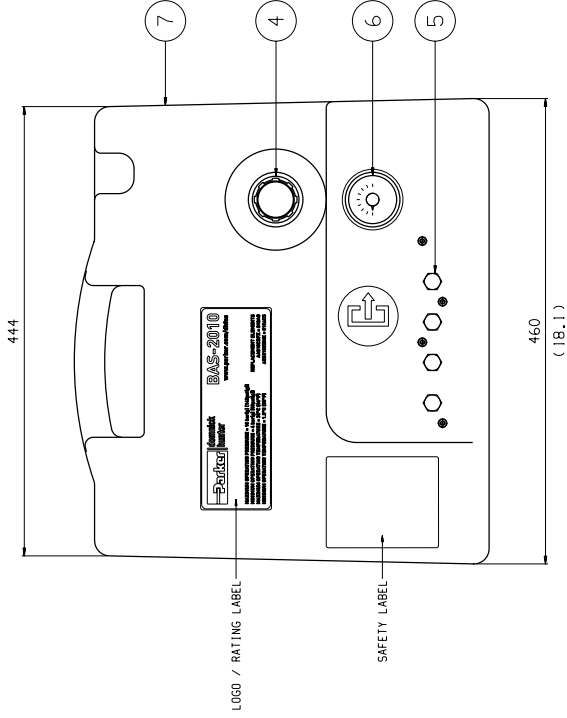
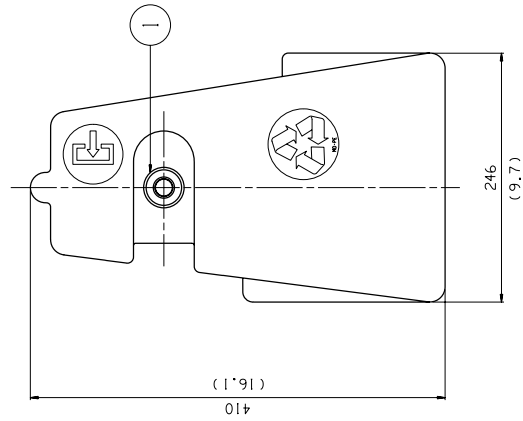
- MAXIMUM OPERATING PRESSURE.....1.0barg (14.5psig)
- MINIMUM OPERATING PRESSURE......4barg (5.8psig)
- MAXIMUM FLOW RATE.....0.6m³/min (21scfm)
- RECOMMENDED OPERATING TEMPERATURE.....MAX. 30°C (86°F)
MIN. 1.5°C (35°F)

NOTE :-

ALL BAS-2010 PRODUCTS ARE SUPPLIED COMPLETE WITH AN O1OACS-4 12 MONTHS SUPPORT PACK, CONSISTING OF 4 x O1OACS CARTRIDGES.



7	BREATHING AIR CASE	BAS-2010	
6	OUTLET PRESSURE GAUGE	-	
5	OUTLET MANIFOLD	1/4" MULTI PORT (F)	
4	PRESSURE REGULATOR		
3	'ACS' GRADE FILTER	ACSO1OCBMX	
2	'AA' GRADE FILTER	AAO1OCBFX	
1	SAFETY COUPLER AND HOSETAIL	-	
ITEM	DESCRIPTION	REMARKS	



Partridge
 Parker Hannifin Ltd
 Chesham, Bucks, UK
 Tel: +44 (0)1494 452000
 Fax: +44 (0)1494 482000

REV DCU No. | DATE | NAME

B	003231122	12/2/2013	LD
A	00329298	14/5/2012	LD
-	0009054	18/02/2010	DH

THIS DOCUMENT IS CONFIDENTIAL AND IS THE PROPERTY OF PARKER HANNIFIN LTD. IT IS TO BE KEPT UNDER WRITING CONTROL BY THE COMPANY.

DRG. No. 101-10084